

## 5 Waveguide to Coaxial Adapters

### 5.1 Waveguide to Coaxial Adapter-Right Angle

HengDa Microwave manufactures

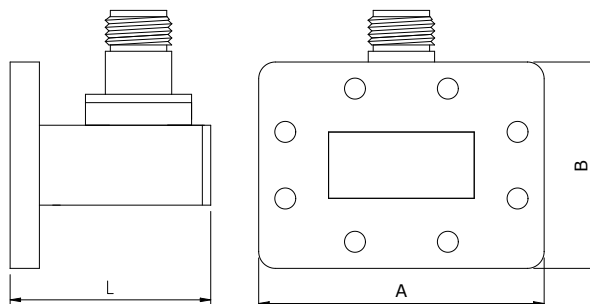
Waveguide to Coaxial Adapters

covering a full frequency range for

Rectangular Waveguides, with



multiple flange and coaxial connector types and configurations available. For more information feel free to call us and discuss your needs with one of our sales engineers.



### Type N Waveguide to Coaxial Adapters

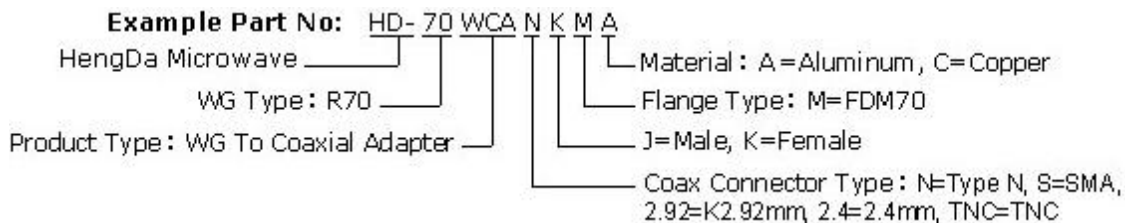
#### 【Specifications】

Model No*	Freq Range (GHz)	VSWR (Max)	Dimensions L*B*A (mm)	WG Type		Flange	Material
				IEC	EIA		
HD-3WCAN...	0.32-0.49	1.25	400*384*676	R3	WR2300	FDP/FDM	Al
HD-4WCAN...	0.35-0.53	1.25	380*359*626	R4	WR2100	FDP/FDM	Al
HD-5WCAN...	0.41-0.62	1.25	350*318*546	R5	WR1800	FDP/FDM	Al
HD-6WCAN...	0.49-0.75	1.25	300*280*470	R6	WR1500	FDP/FDM	Al
HD-8WCAN...	0.64-0.98	1.25	260*235*381	R8	WR1150	FDP/FDM	Al
HD-9WCAN...	0.75-1.15	1.25	231*212*336	R9	WR975	FDP/FDM	Al
HD-12WCAN...	0.96-1.46	1.25	166*187*285	R12	WR770	FDP/FDM	Al
HD-14WCAN...	1.13-1.73	1.25	150*138*220	R14	WR650	FDP/FDM	Al
HD-18WCAN...	1.45-2.20	1.25	120*120*185	R18	WR510	FDP/FDM	Al/Cu
HD-22WCAN...	1.72-2.61	1.25	100*106*161	R22	WR430	FDP/FDM	Al/Cu

HD-26WCAN...	2.17-3.30	1.25	90*95*138	R26	WR340	FDP/FDM	Al/Cu
HD-32WCAN...	2.60-3.95	1.25	72*76*114	R32	WR284	FDP/FDM	Al/Cu
HD-40WCAN...	3.22-4.90	1.25	65*70*98	R40	WR229	FDP/FDM	Al/Cu
HD-48WCAN...	3.94-5.99	1.25	54*63*89	R48	WR187	FDP/FDM	Al/Cu
HD-58WCAN...	4.64-7.05	1.25	50*62*81	R58	WR159	FDP/FDM	Al/Cu
HD-70WCAN...	5.38-8.17	1.25	48*49*68	R70	WR137	FDP/FDM	Al/Cu
HD-84WCAN...	6.57-9.99	1.25	40*48*48	R84	WR112	FBP/FBM/FBE	Al/Cu
HD-100WCAN...	8.20-12.4	1.25	38*41*41	R100	WR90	FBP/FBM/FBE	Al/Cu
HD-120WCAN...	9.84-15.0	1.25	30*38*38	R120	WR75	FBP/FBM/FBE	Al/Cu
HD-140WCAN...	11.9-18.0	1.25	27*33*33	R140	WR62	FBP/FBM/FBE	Al/Cu
HD-180WCAN...	14.5-22.0	1.25	27*30*30	R180	WR51	FBP/FBM/FBE	Al/Cu

\*Indicates Model Number. See Ordering Information for complete part number.

### 【Ordering Information】



- Flange type: Multiple types available - see Technical Reference page
- Finish: Corrosion protection plus black/grey top coat
- Standard unit provided not sealed pressure tight unless otherwise specified

## SMA Waveguide to Coaxial Adapters

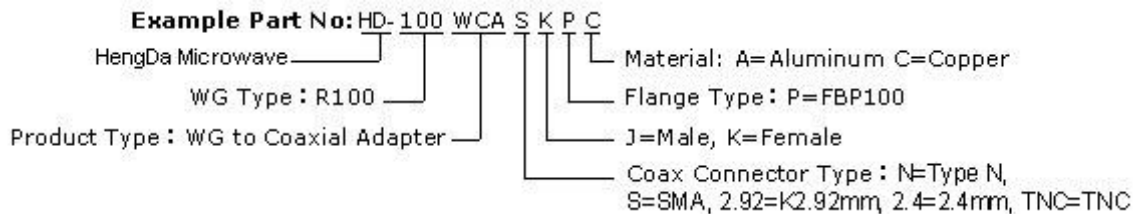
### 【Specifications】

Model No*	Freq Range (GHz)	VSWR (Max)	Dimensions L*B*A (mm)	WG Type		Flange	Material
				IEC	EIA		
HD-100WCAS...	8.20-12.4	1.25	38*41*41	R100	WR90	FBP/FBM/FBE	Al/Cu
HD-120WCAS...	9.84-15.0	1.25	30*38*38	R120	WR75	FBP/FBM/FBE	Al/Cu
HD-140WCAS...	11.9-18.0	1.25	27*33*33	R140	WR62	FBP/FBM/FBE	Al/Cu
HD-180WCAS...	14.5-22.0	1.25	27*30*30	R180	WR51	FBP/FBM/FBE	Al/Cu
HD-220WCAS...	17.6-26.7	1.40	25*22*22	R220	WR42	FBP/FBM/FBE	Al/Cu

HD-320WCAS...	26.3-40.0	1.50	25*19*19	R320	WR28	FBP/FBM/FBE	Al/Cu
---------------	-----------	------	----------	------	------	-------------	-------

\*Indicates Model Number. See Ordering Information for complete part number.

### 【Ordering Information】



- Flange type: Multiple types available - see HengDa Microwave Flanges page
- Finish: Corrosion protection plus black top coat
- Standard unit provided not sealed pressure tight unless otherwise specified.

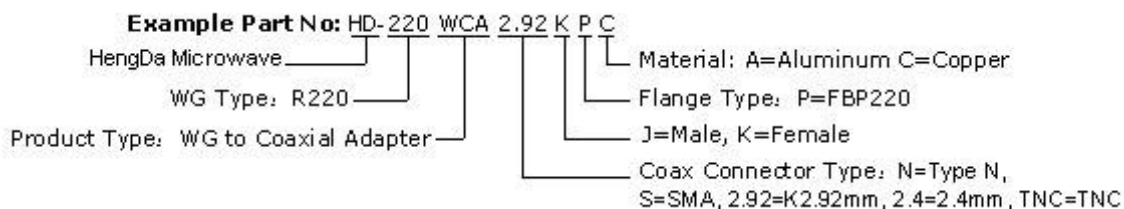
## K2.92mm Waveguide to Coaxial Adapters

### 【Specifications】

Model No*	Freq Range (GHz)	VSWR (Max)	Dimensions L*B*A (mm)	WG Type		Flange	Material
				IEC	EIA		
HD-220WCA2.92...	17.6-26.7	1.50	33*22*22	R220	WR42	FBP/FBM/FBE	Al/Cu
HD-260WCA2.92...	21.7-33.0	1.50	27*21*21	R260	WR34	FBP/FBM/FBE	Al/Cu
HD-320WCA2.92...	26.3-40.0	1.50	25*19*19	R320	WR28	FBP/FBM/FBE	Al/Cu

\*Indicates Model Number. See Ordering Information for complete part number.

### 【Ordering Information】



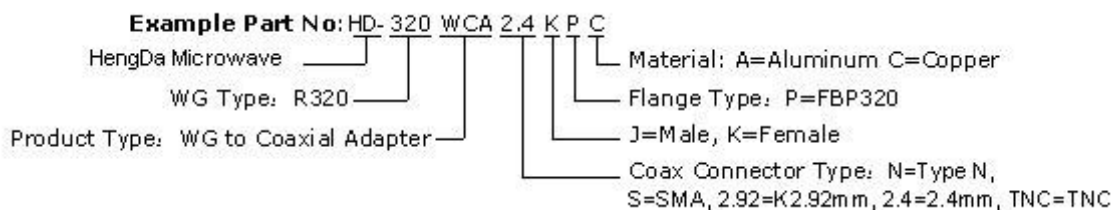
- Flange type: Multiple types available - see HengDa Microwave Flanges page
- Finish: Corrosion protection plus black top coat
- Standard unit provided not sealed pressure tight unless otherwise specified.

## 2.4mm Waveguide to Coaxial Adapters

Model No*	Freq Range (GHz)	VSWR (Max)	Dimensions L*B*A (mm)	WG Type		Flange	Material
				IEC	EIA		
HD-220WCA2.4...	17.6-26.7	1.50	36*22*22	R220	WR42	FBP/FBM/FBE	Al/Cu
HD-260WCA2.4...	21.7-33.0	1.60	27*21*21	R260	WR34	FBP/FBM/FBE	Al/Cu
HD-320WCA2.4...	26.3-40.0	1.60	25*19*19	R320	WR28	FBP/FBM/FBE	Al/Cu

\*Indicates Model Number. See Ordering Information for complete part number.

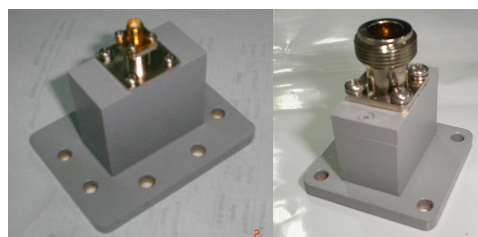
### 【Ordering Information】



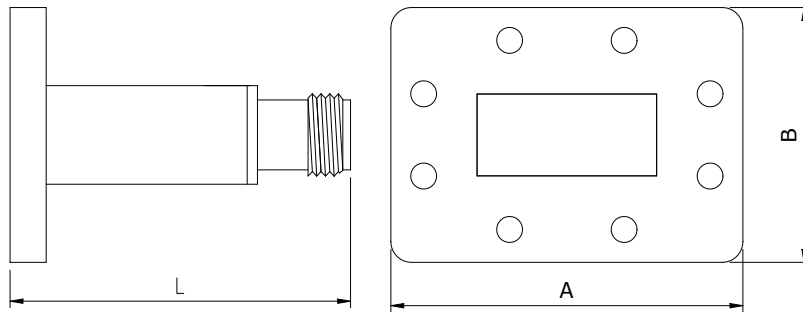
- Flange type: Multiple types available - see HengDa Microwave Flanges page
- Finish: Corrosion protection plus black top coat
- Standard unit provided not sealed pressure tight unless otherwise specified.

## 5.2 Waveguide to Coaxial Adapter-Endlaunch

HengDa Microwave manufactures End-launch Waveguide to Coaxial Adapters covering a full frequency range for Rectangular Waveguides, with multiple flange and coaxial connector types and configurations available. For more information feel



free to call us and discuss your needs with one of our sales engineers.

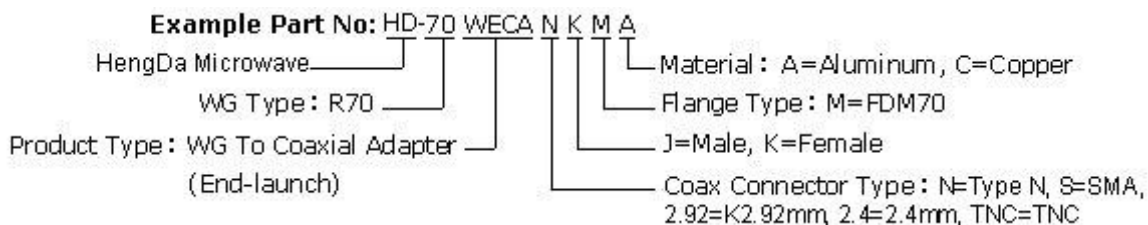

**【Specifications】**

Model No*	Freq Range (GHz)	VSWR (Max)	Connector Type	Dimensions L*B*A (mm)	WG Type		Flange	Material
					IEC	EIA		
HD-22WECAN...	1.72-2.61	1.25	N	128.7*106*161	R22	WR430	FDP/FDM	Al/Cu
HD-22WECAS...	1.72-2.61	1.25	SMA	113.4*106*161	R22	WR430	FDP/FDM	Al/Cu
HD-26WECAN...	2.17-3.30	1.25	N	118.7*95*138	R26	WR340	FDP/FDM	Al/Cu
HD-32WECAN...	2.60-3.95	1.25	N	108.7*76*114	R32	WR284	FDP/FDM	Al/Cu
HD-40WECAN...	3.22-4.90	1.25	N	94.7*70*98	R40	WR229	FDP/FDM	Al/Cu
HD-48WECAN...	3.94-5.99	1.25	N	74.7*63*89	R48	WR187	FDP/FDM	Al/Cu
HD-48WECAS...	3.94-5.99	1.25	SMA	78.4*63*89	R48	WR187	FDP/FDM	Al/Cu
HD-58WECAN...	4.64-7.05	1.25	N	72.4*62*81	R58	WR159	FDP/FDM	Al/Cu
HD-70WECAN...	5.38-8.17	1.25	N	68.8*49*68	R70	WR137	FDP/FDM	Al/Cu
HD-84WECAN...	6.57-9.99	1.25	N	58.8*48*48	R84	WR112	FBP/FBM/FBE	Al/Cu
HD-84WECAS...	6.57-9.99	1.25	SMA	49.5*48*48	R84	WR112	FBP/FBM/FBE	Al/Cu
HD-100WECAN...	8.20-12.40	1.25	N	49.3*41*41	R100	WR90	FBP/FBM/FBE	Al/Cu
HD-100WECAS...	8.20-12.40	1.25	SMA	40*41*41	R100	WR90	FBP/FBM/FBE	Al/Cu
HD-120WECAN...	9.84-15.0	1.25	N	46.3*38*38	R120	WR75	FBP/FBM/FBE	Al/Cu
HD-120WECAS...	9.84-15.0	1.25	SMA	37*38*38	R120	WR75	FBP/FBM/FBE	Al/Cu
HD-140WECAN...	11.9-18.0	1.25	N	43.3*33*33	R140	WR62	FBP/FBM/FBE	Al/Cu
HD-140WECAS...	11.9-18.0	1.25	SMA	34*33*33	R140	WR62	FBP/FBM/FBE	Al/Cu
HD-220WECAS...	17.6-26.7	1.50	SMA	26.5*22*22	R220	WR42	FBP/FBM/FBE	Al/Cu
HD-220WECAK...	17.6-26.7	1.50	K2.92mm	27.8*22*22	R220	WR42	FBP/FBM/FBE	Al/Cu
HD-260WECAS...	21.7-33.0	1.50	SMA	26.1*21*21	R260	WR34	FBP/FBM/FBE	Al/Cu
HD-260WECAK...	21.7-33.0	1.50	K2.92mm	29*21*21	R260	WR34	FBP/FBM/FBE	Al/Cu
HD-320WECAS...	26.3-40.0	1.50	SMA	25.9*19*19	R320	WR28	FBP/FBM/FBE	Al/Cu

HD-320WECAK...	26.3-40.0	1.50	K2.92mm	28.9*19*19	R320	WR28	FBP/FBM/FBE	Al/Cu
----------------	-----------	------	---------	------------	------	------	-------------	-------

\*Indicates Model Number. See Ordering Information for complete part number.

### 【Ordering Information】



- Flange type: Multiple types available - see HengDa Microwave Flanges page
- Finish: Corrosion protection plus black top coat
- Standard unit provided not sealed pressure tight unless otherwise specified.

### 5.3 Circular Waveguide to Coaxial Adapter



HengDa Microwave manufactures Circular Waveguide to Coaxial Adapter covering a full frequency range for Circular Waveguides, It is used to realize circular waveguide to coaxial transformation .We Also provide the same specification of high-power circular waveguide coaxial Adapter (CWHPCA type). For more information feel free to call us and discuss your needs with one of our sales engineers.

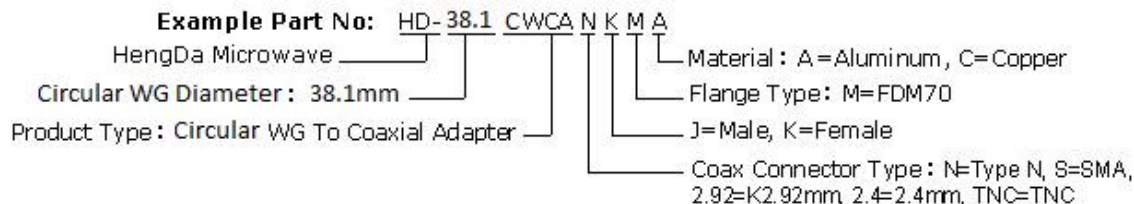
### 【Specifications】

Model No*	Freq Range (GHz)	Working bandwidth	Inside diameter $\Phi$ (mm)	VSWR (Max)	Connector Type
HD-114.58CWCAN	1.76~2.42	20%	114.58	1.25	N-50K

HD-97.87CWCAN	2.1~2.8	20%	97.87	1.25	N-50K
HD-83.62CWCAN	2.45~3.3	20%	83.62	1.25	N-50K
HD-71.42CWCAN	2.83~3.88	20%	71.42	1.25	N-50K
HD-51.99CWCAN	3.9~5.3	20%	51.99	1.25	N-50K
HD-44.45CWCAN	4.55~6.23	20%	44.45	1.25	N-50K
HD-38.1CWCAN	5.3~7.3	20%	38.1	1.25	N-50K
HD-32.537CWCAN	6.3~8.5	20%	32.537	1.25	N-50K
HD-27.788CWCAN	7.3~9.5	20%	27.788	1.25	N-50K
HD-23.852CWCAN	8.5~11.5	20%	23.852	1.25	N-50K
HD-17.415CWCAS	11.6~15.9	20%	17.415	1.25	SMA-50K
HD-15.088CWCAS	13.4~18.4	20%	15.088	1.25	SMA-50K
HD-12.7CWCAS	15.9~21.8	20%	12.7	1.25	SMA-50K
HD-9.525CWCAK	21.2~29.1	20%	9.525	1.25	K 2.92
HD-8.331CWCAK	24.3~33.2	20%	8.331	1.25	K 2.92
HD-7.137CWCAK	28.3~38.8	20%	7.137	1.25	K 2.92

\*Indicates Model Number. See Ordering Information for complete part number.

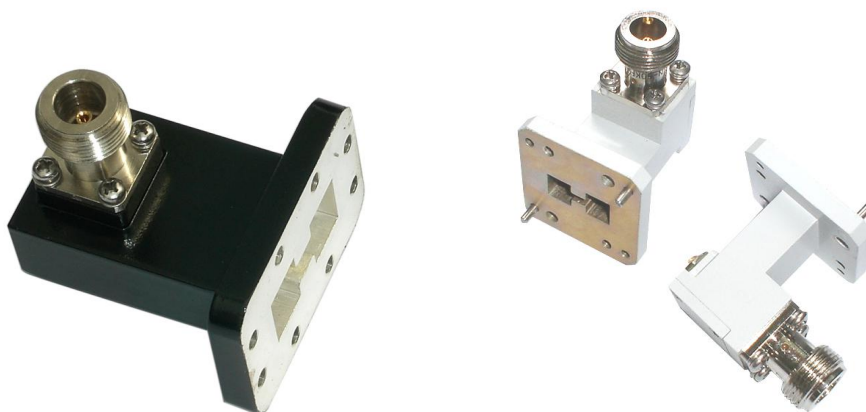
### 【Ordering Information】



- Flange type: Multiple types available - see HengDa Microwave Flanges page
  - Finish: Corrosion protection plus black top coat
  - Standard unit provided not sealed pressure tight unless otherwise specified.

## 5.4 Double-ridged Waveguide to Coaxial Adapter

### 5.4.1 Double-ridged Waveguide to Coaxial Adapter-Low Power



HengDa Microwave manufactures Double-ridged Waveguide to Coaxial Adapter covering a full frequency range, within the full bandwidth of ridge waveguide (2-3 octave) to achieve a good match, with multiple flange and coaxial connector types and configurations available. For more information feel free to call us and discuss your needs with one of our sales engineers.

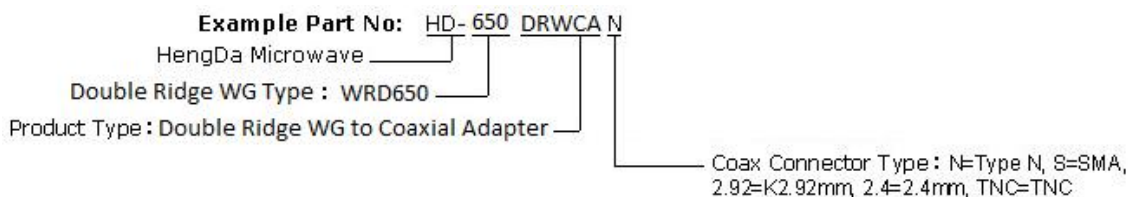
**【Specifications】**

Model No*	Freq Range (GHz)	VSWR (Max)	WG Type		Connector Type
			IEC	EIA	
HD-84DRWCAN	0.84-2	1.50	24JS840	WRD84D24	N-50K
HD-150DRWCAN	1.5-3.6	1.50	24JS1500	WRD150D24	N-50K
HD-200DRWCAN	2-4.8	1.50	24JS2000	WRD200D24	N-50K
HD-250DRWCAN	2.6-7.8	1.50	30JS2500	WRD250D30	N-50K
HD-350DRWCAN	3.5-8.2	1.50	24JS3500	WRD350D24	N-50K
HD-475DRWCAN	4.75-11	1.50	24JS4750	WRD475D24	N-50K
HD-500DRWCAS	5-18	1.50	36JS5000	WRD500D36	SMA-50K
HD-580DRWCAS	5.8-16	1.50	28JS5800	WRD580D28	SMA-50K
HD-650DRWCAS	6.5-18	1.50	28JS6500	WRD650D28	SMA-50K
HD-750DRWCAS	7.5-18	1.50	24JS7500	WRD750D24	SMA-50K
HD-700DRWCAS	7-18.5	1.50	26JS7000	WRD700D26	SMA-50K
HD-1100DRWCAK	11-26.5	1.50	24JS11000	WRD1100C24	K2.92-50K
HD-1800DRWCAK	18-40	2.00	24JS18000	WRD1800C24	K2.92-50K

*\*Indicates Model Number. See Ordering Information for complete part number.*

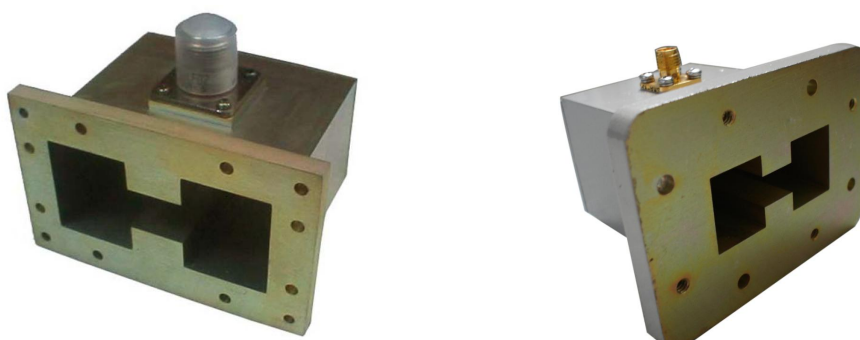


**【Ordering Information】**



- Flange type: Multiple types available - see HengDa Microwave Flanges page
- Finish: Corrosion protection plus black top coat
- Standard unit provided not sealed pressure tight unless otherwise specified.

**5.4.2 High Power Double-ridged Waveguide to Coaxial Adapter**



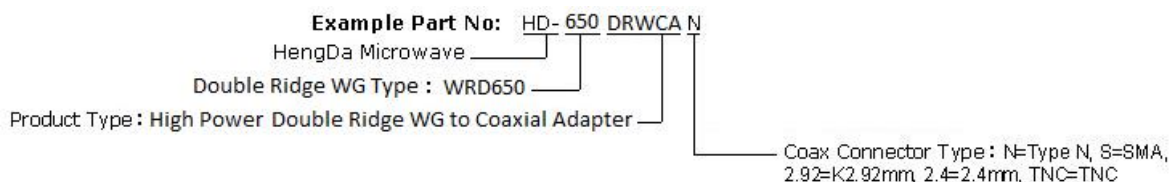
**【Specifications】**

Model No*	Freq Range (GHz)	VSWR (Max)	WG Type		Connector Type	Average Power (W)
			IEC	EIA		
HD-84DRWHPCA63	0.84-2	1.50	24JS840	WRD84D24	6339-50K	100-3000
HD-84DRWHPCAN	0.84-2	1.50	24JS840	WRD84D24	N-50K	10-300
HD-150DRWHPCAN	1.5-3.6	1.50	24JS1500	WRD150D24	N-50K	10-300
HD-200DRWHPCAN	2-4.8	1.50	24JS2000	WRD200D24	N-50K	10-300
HD-250DRWHPCAN	2.6-7.8	1.50	30JS2500	WRD250D30	N-50K	10-300
HD-350DRWHPCAN	3.5-8.2	1.50	24JS3500	WRD350D24	N-50K	10-300
HD-475DRWHPCAN	4.75-11	1.50	24JS4750	WRD475D24	N-50K	10-300

Model No*	Freq Range (GHz)	VSWR (Max)	WG Type		Connector Type	Average Power (W)
			IEC	EIA		
HD-500DRWHPCAS	5-18	1.50	36JS5000	WRD500D36	SMA-50K	10-100
HD-580DRWHPCAS	5.8-16	1.50	28JS5800	WRD580D28	SMA-50K	10-100
HD-650DRWHPCAS	6.5-18	1.50	28JS6500	WRD650D28	SMA-50K	10-100
HD-750DRWHPCAS	7.5-18	1.50	24JS7500	WRD750D24	SMA-50K	10-100
HD-700DRWHPCAS	7-18.5	1.80	26JS7000	WRD700D26	SMA-50K	10-100
HD-1100DRWHPCA K	11-26.5	1.80	24JS11000	WRD1100C24	K2.92-50K	10-30
HD-1800DRWHPCA K	18-40	2.0	24JS18000	WRD1800C24	K2.92-50K	10-30

\*Indicates Model Number. See Ordering Information for complete part number.

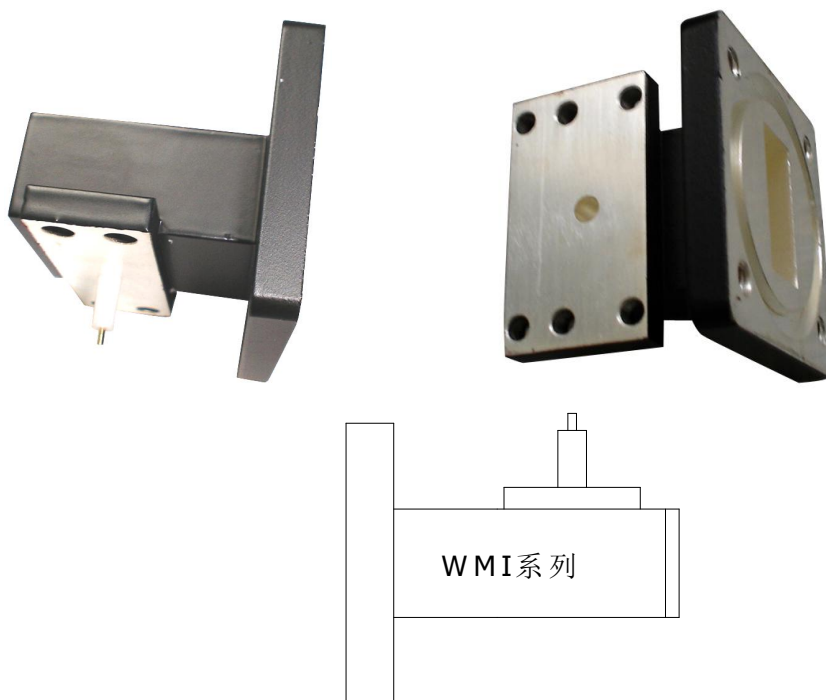
### 【Ordering Information】



- Flange type: Multiple types available - see HengDa Microwave Flanges page
- Finish: Corrosion protection plus black top coat
- Standard unit provided not sealed pressure tight unless otherwise specified.

## 5.5 Waveguide to Microstrip Adapter

### 5.5.1 Waveguide to Microstrip Adapter ---Right Angle



### 【Specifications】

Model No*	Freq Range (GHz)	VSWR (Max)	WG Type		Flange	Material
			IEC	EIA		
HD-70WMI	5.38-8.17	1.25	BJ70	WR137	FDP/FDM	Al/Cu
HD-84WMI	6.57-9.99	1.25	BJ84	WR112	FBP/FBM/FBE	Al/Cu
HD-100WMI	8.20-12.40	1.25	BJ100	WR90	FBP/FBM/FBE	Al/Cu
HD-120WMI	9.84-15.0	1.25	BJ120	WR75	FBP/FBM/FBE	Al/Cu
HD-140WMI	11.9-18.0	1.25	BJ140	WR62	FBP/FBM/FBE	Al/Cu
HD-180WMI	14.5-22.0	1.25	BJ180	WR51	FBP/FBM/FBE	Al/Cu
HD-220WMI	17.6-26.7	1.30	BJ220	WR42	FBP/FBM/FBE	Al/Cu
HD-260WMI	21.7-33.0	1.50	BJ260	WR34	FBP/FBM/FBE	Al/Cu
HD-320WMI	26.5-40.0	1.50	BJ320	WR28	FBP/FBM/FBE	Al/Cu

\*Indicates Model Number. See Ordering Information for complete part number.

### 【Ordering Information】

- 11 -

=====

XI'AN HENGDA MICROWAVE TECHNOLOGY DEVELOPMENT CO., LTD

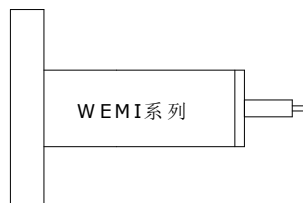
No.485, Feitian Road, National Civil Aerospace Industrial Base, Xi'an, Shaanxi, P.R.China

Tel: +86-29-85266226 Fax: +86-29-85248049 www.hengdamw.com

**Example Part No: HD-70WMI**  
 HengDa Microwave \_\_\_\_\_  
 WG Type: R70 \_\_\_\_\_ Product Type: Right Angle WG to Microstrip Adapter

- Flange type: Multiple types available - see HengDa Microwave Flanges page
- Finish: Corrosion protection plus black top coat
- Standard unit provided not sealed pressure tight unless otherwise specified.

### 5.5.2 Waveguide to Microstrip Adapter ---End launch



Model No*	Freq Range (GHz)	VSWR (Max)	WG Type		Flange	Material
			IEC	EIA		
HD-70WEMI	5.38-8.17	1.25	BJ70	WR137	FDP/FDM	Al/Cu
HD-100WEMI	8.20-12.40	1.25	BJ100	WR90	FBP/FBM/FBE	Al/Cu
HD-120WEMI	9.84-15.0	1.25	BJ120	WR75	FBP/FBM/FBE	Al/Cu
HD-140WEMI	11.9-18.0	1.25	BJ140	WR62	FBP/FBM/FBE	Al/Cu

HD-180WEMI	14.5-22.0	1.25	BJ180	WR51	FBP/FBM/FBE	Al/Cu
HD-220WEMI	17.6-26.7	1.30	BJ220	WR42	FBP/FBM/FBE	Al/Cu
HD-260WEMI	21.7-33.0	1.50	BJ260	WR34	FBP/FBM/FBE	Al/Cu
HD-320WEMI	26.5-40.0	1.50	BJ320	WR28	FBP/FBM/FBE	Al/Cu

*\*Indicates Model Number. See Ordering Information for complete part number.*

### 【Ordering Information】

**Example Part No:** HD- 70 WEMI

HengDa Microwave \_\_\_\_\_

WG Type: R70 \_\_\_\_\_

Product Type: End-launch WG to Microstrip Adapter

- Flange type: Multiple types available - see HengDa Microwave Flanges page
- Finish: Corrosion protection plus black top coat
- Standard unit provided not sealed pressure tight unless otherwise specified.